

11.0 Replacement parts

Having the Model Number and Serial Number of your machine available when you call will allow us to serve you quickly and accurately.

Non-proprietary parts, such as fasteners, can be found at local hardware stores, or may be ordered from Powermatic.

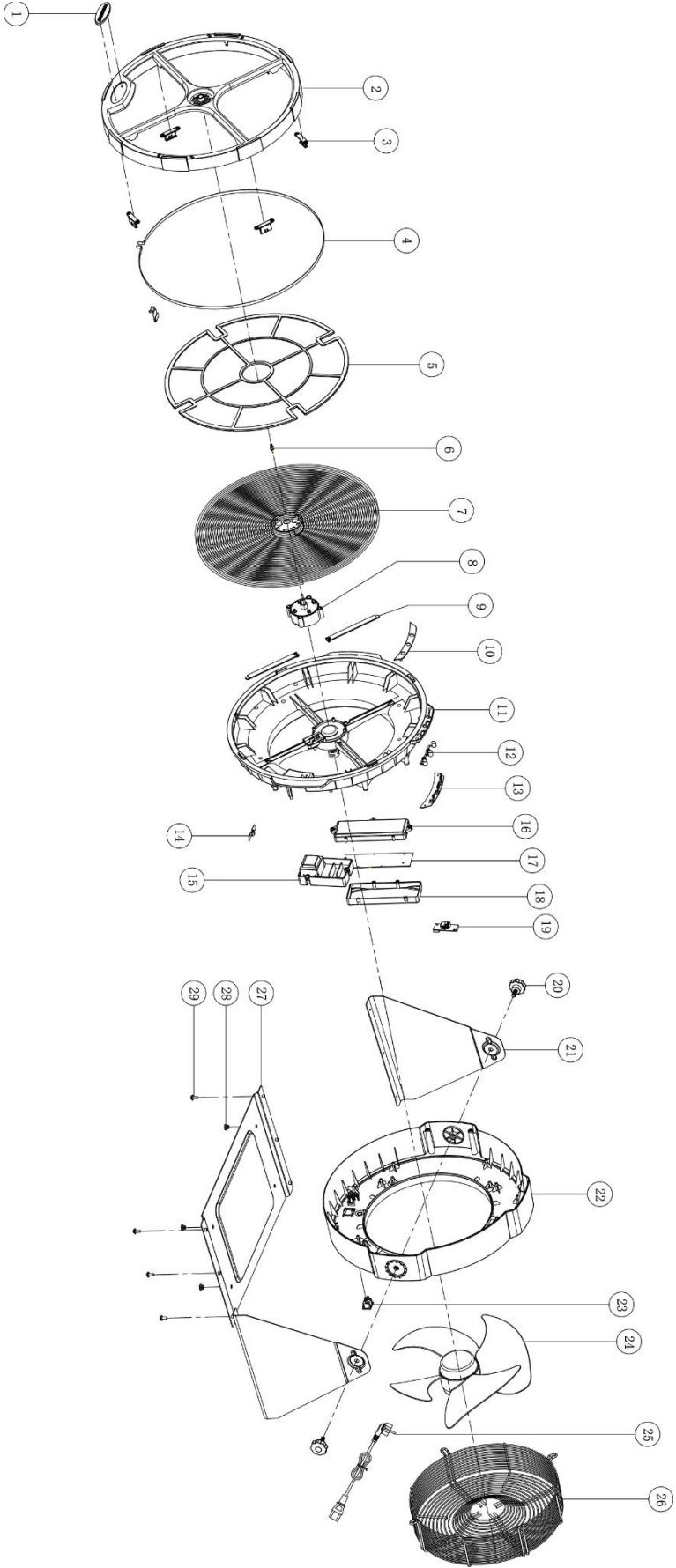
Some parts are shown for reference only, and may not be available individually.

11.1.1 PM1250 Electrostatic AFS – Parts List

| Index No | Part No | Description | Size | Qty |
|----------|----------------|----------------------------------------------------------------|------------------|-----|
| 1 | 2211-J1000-01 | Powermatic Logo | W100 x H36 mm | 1 |
| 2 | 2101-J1000-01 | Cover | | 1 |
| 3 | 2112-J1000-01 | Cover Fastener | | 4 |
| 4 | 2203-J1000-01 | Metal Ring | | 1 |
| 5 | 2111-J1000-01 | Pre-Filter | | 1 |
| 6 | 2501-J1000-01 | Carbon Brush | | 1 |
| 7 | 1791332 | Filter | | 1 |
| 8 | 7201-J1000-02 | Stator Assembly | | 1 |
| 9 | 2109-J1000-01 | Cord Cover | | 2 |
| 10 | 2115-J1000-01 | Display Board | | 1 |
| 11 | 2102-J1000-01 | Mid-Frame | | 1 |
| 12 | 2114-J1000-01 | Control Button Set | | 1 |
| 13 | 1812-JE081-01 | Control PCBA | | 1 |
| 14 | 2205-J1000-01 | Grounding Connector | | 1 |
| 15 | 7103-JE081-01 | High Voltage Unit | | 1 |
| 16 | 2105-J1000-01 | Power Box – Top | | 1 |
| 17 | 1811-JE081-01 | Power PCBA | | 1 |
| 18 | 2106-J1000-01 | Power Box – Bottom | | 1 |
| 19 | 1813-J1000-02 | Switch PCBA | | 1 |
| 20 | 2401-J1000-01 | Knob | M10x25 D=60mm | 2 |
| 21 | 2202-J1000-01 | Side Plate | | 2 |
| 22 | 2103-JE081-01 | Rear Cover | | 1 |
| 23 | 1102-JE081-01 | Pin Socket | | 1 |
| 24 | 1822-00000-01 | EBM Fan w/ Motor | 65W AC 230V/50Hz | 1 |
| 25 | 1801-JE081-01 | Power Cord | H05VV-F 3G | 1 |
| 26 | 2202-C800A-01 | Outer Net | | 1 |
| 27 | 2201-J1000-01 | Base Plate | | 1 |
| 28 | 2118-J1000-01 | Rubber Pad * | | 4 |
| 29 | 3130-05010-01 | Phillips Pan Hd Machine Screw w/Lock Washer (not shown) *M5x10 | | 6 |
| 30 | 4230-JE081-11 | I.D. Label, PM1250 (not shown) | | 1 |
| 31 | 4230-J1000-13 | Warning Label, PM1250 (not shown) | | 1 |
| | 4230- JE081-13 | Warning Label, EU Type (not shown) | | 1 |
| 32 | 2502-JE081-01 | Remote Control (not shown) | | 1 |
| 33 | PM1250-36 | Cleaning Brush (not shown) | | 1 |
| | | Batteries – local purchase | AAA | 2 |
| | PM1250-HP | Hardware Package | | |

* items included in hardware package

11.1.2 PM1250 Electrostatic AFS – Exploded View



12.0 Electrical connections for PM1250

